

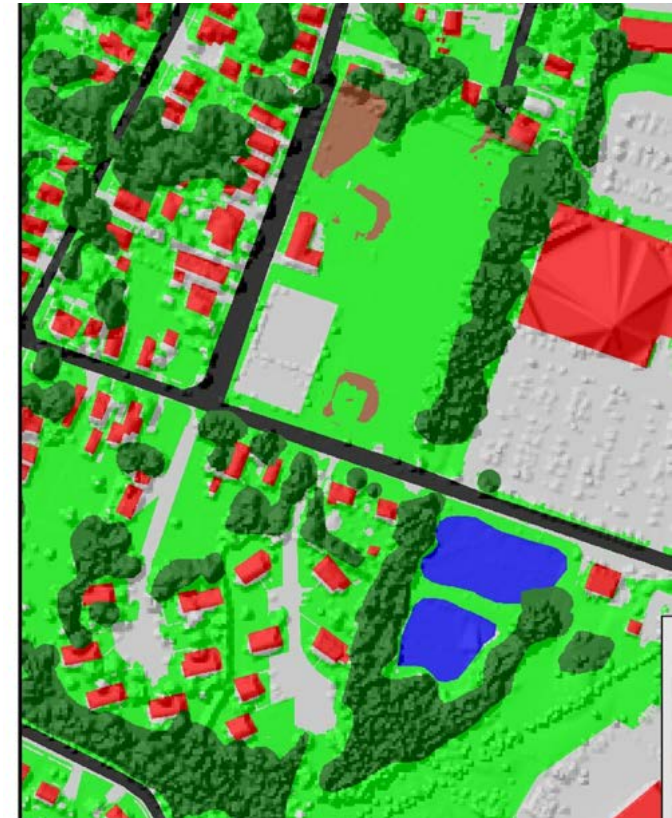


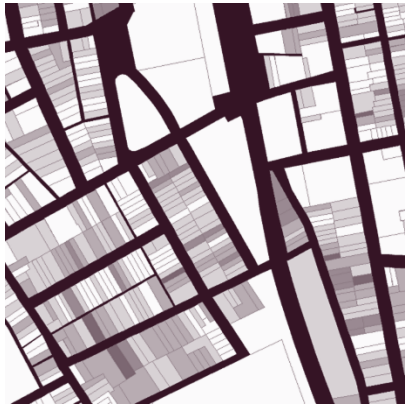
# Geospatial Data and Imagery Acquisition related to the Treasurer's Report on Clean Water

HOUSE COMMITTEE ON NATURAL RESOURCES, FISH AND WILDLIFE

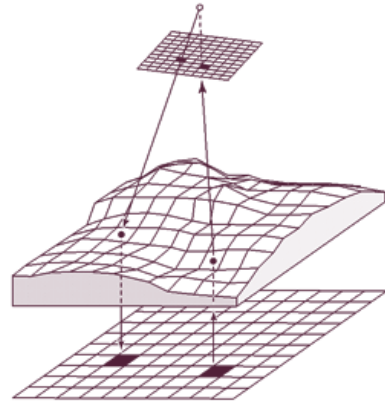
FEBRUARY 2, 2017

JOHN E. ADAMS

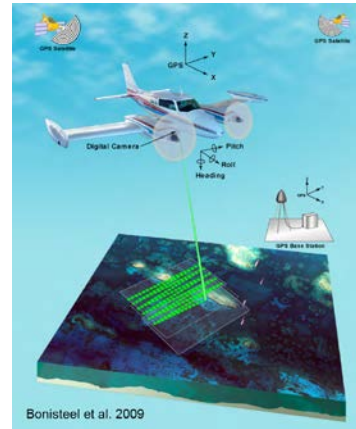




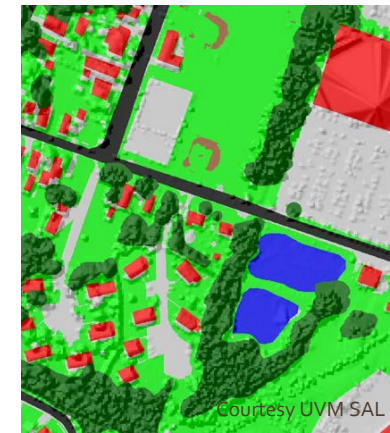
**PARCELS**



**ORTHOIMAGERY**



**LIDAR**



**LAND COVER /  
IMPERVIOUS SURFACE**

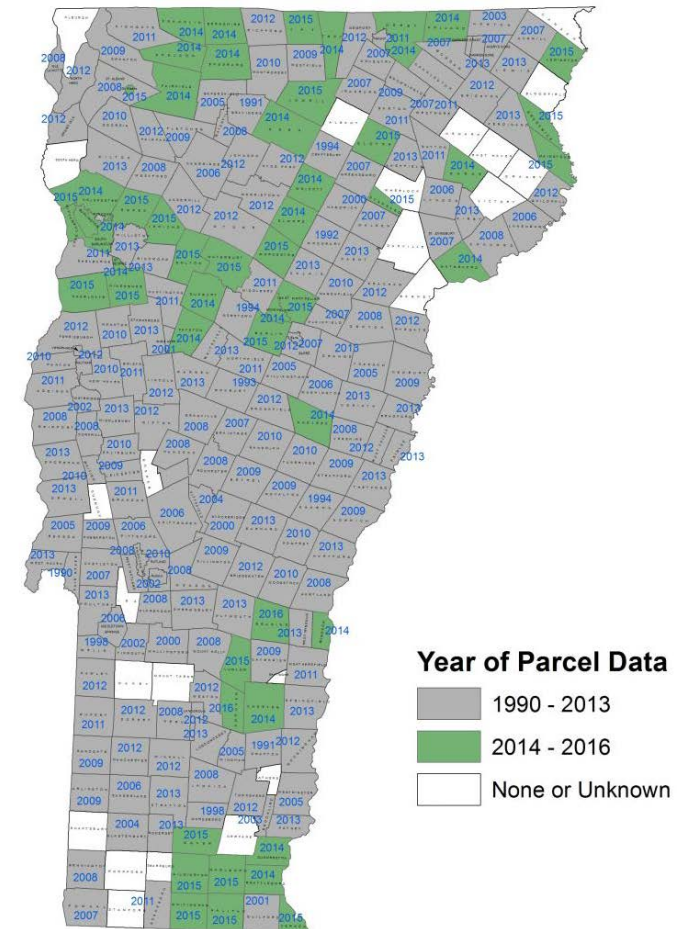
# Statewide Parcel Data Program

This interagency program will create a statewide, consistent, and up-to-date GIS database of parcel boundaries. Parcels will include SPAN information, that will allow the data to be linked to the grand list.

1/3<sup>rd</sup> of the State will be updated every year for 3 years.

STATEWIDE COVERAGE GOAL: End of 2019

VT Parcel Mapping Data Status  
July 2016



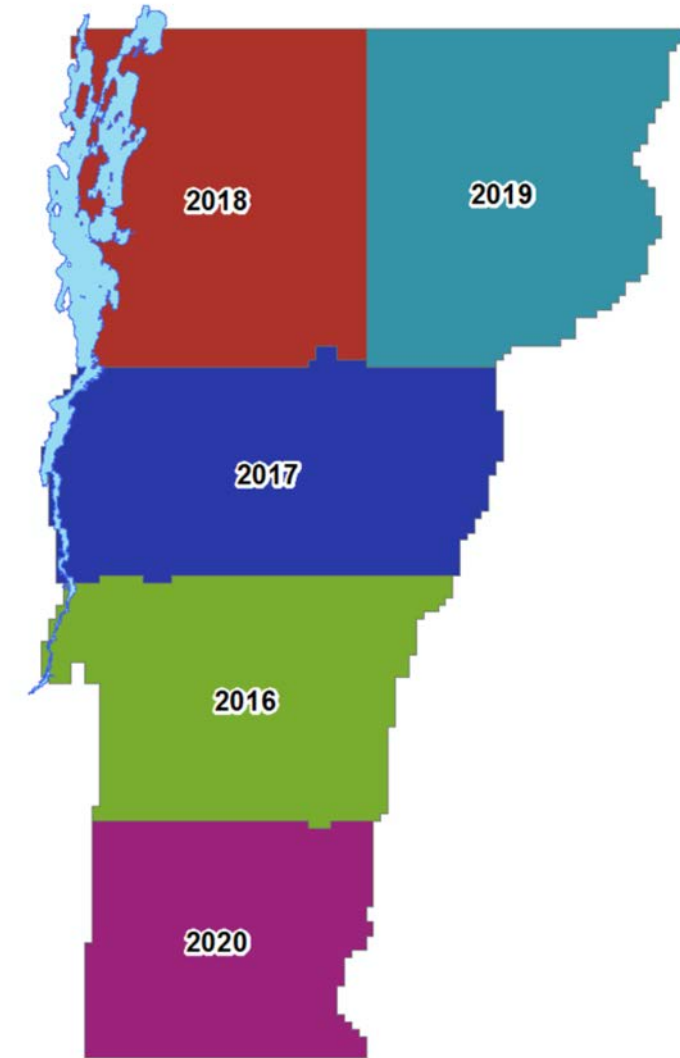
# Orthophoto Program

## OVERVIEW

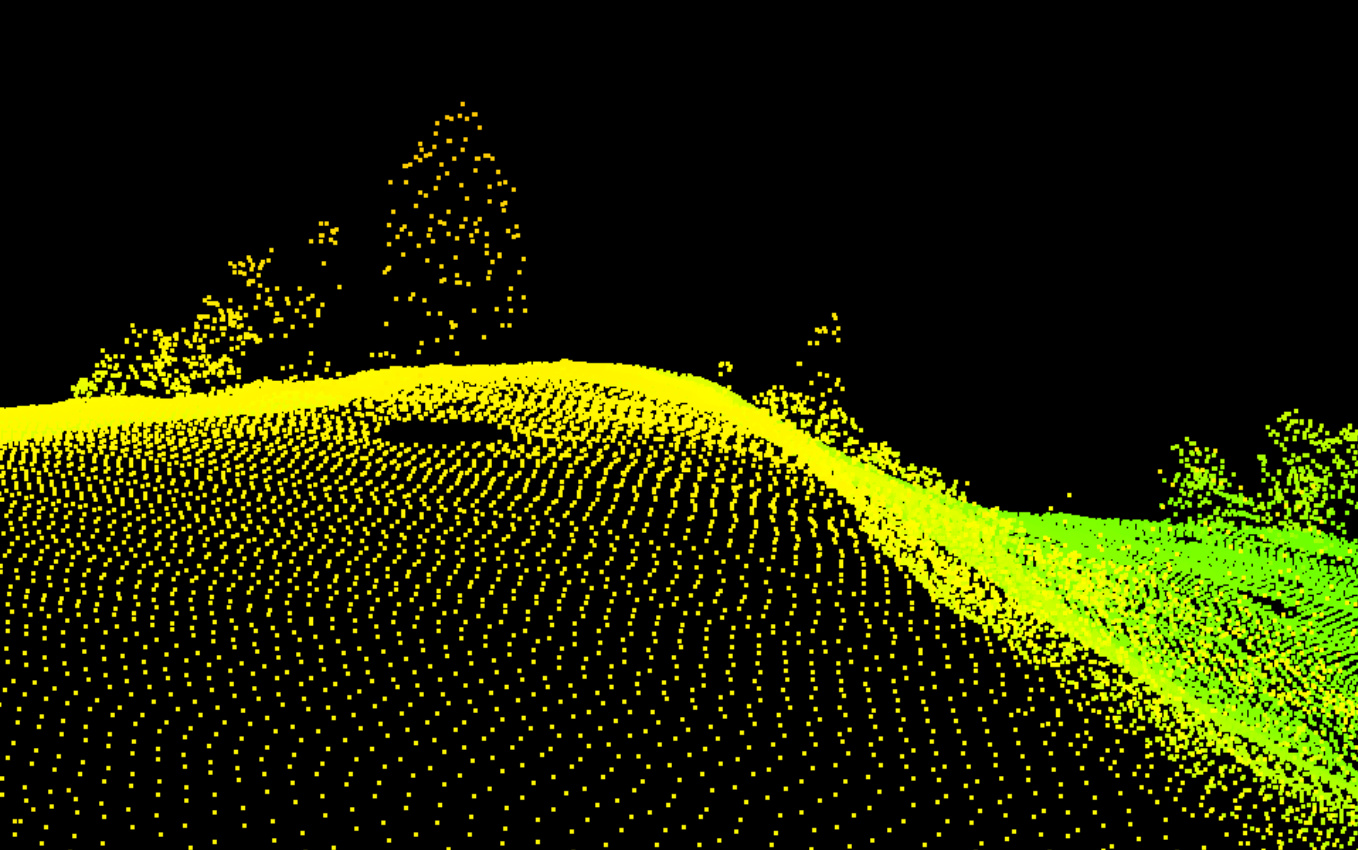
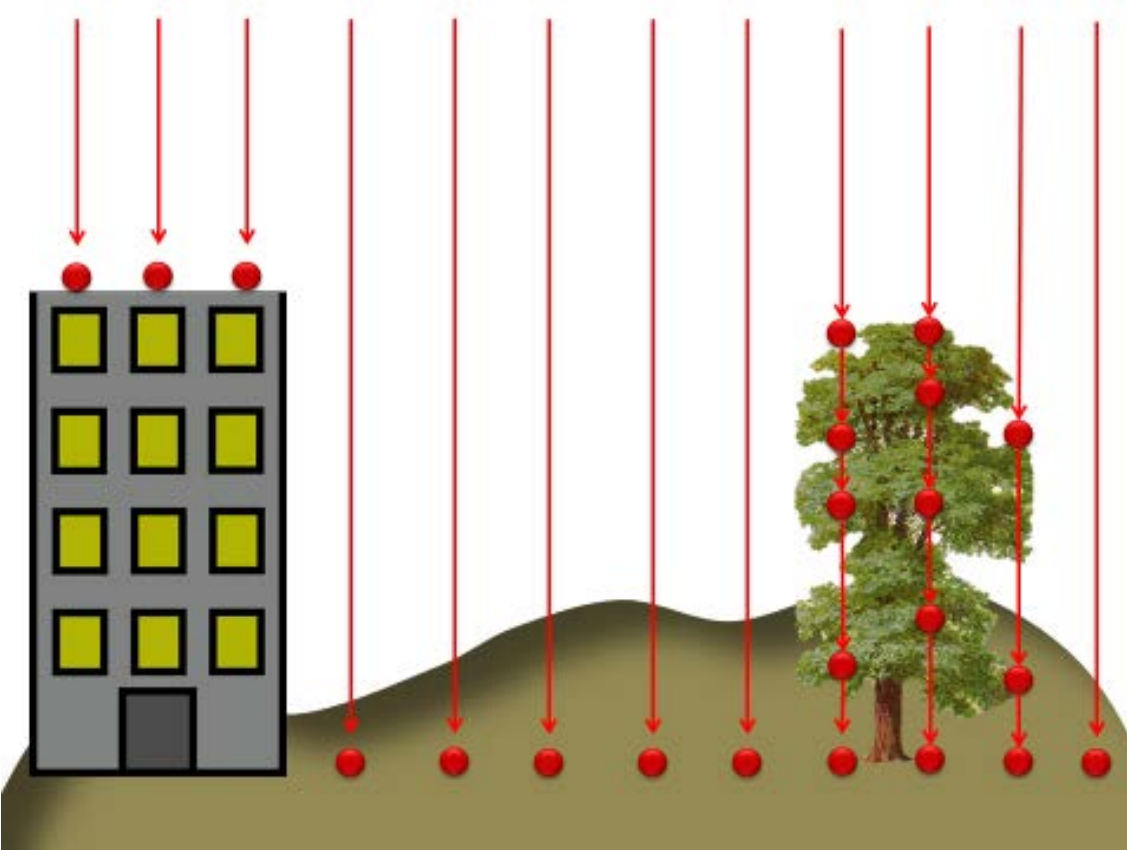
- Collected in sections with 5 year cycle
- Leaf-Off, No Snow, No Clouds, Infrared

## 2016-2020 ACQUISITION PLAN

- Minimum 30cm resolution
- Accuracy within 73.4cm meeting NSSDA accuracy



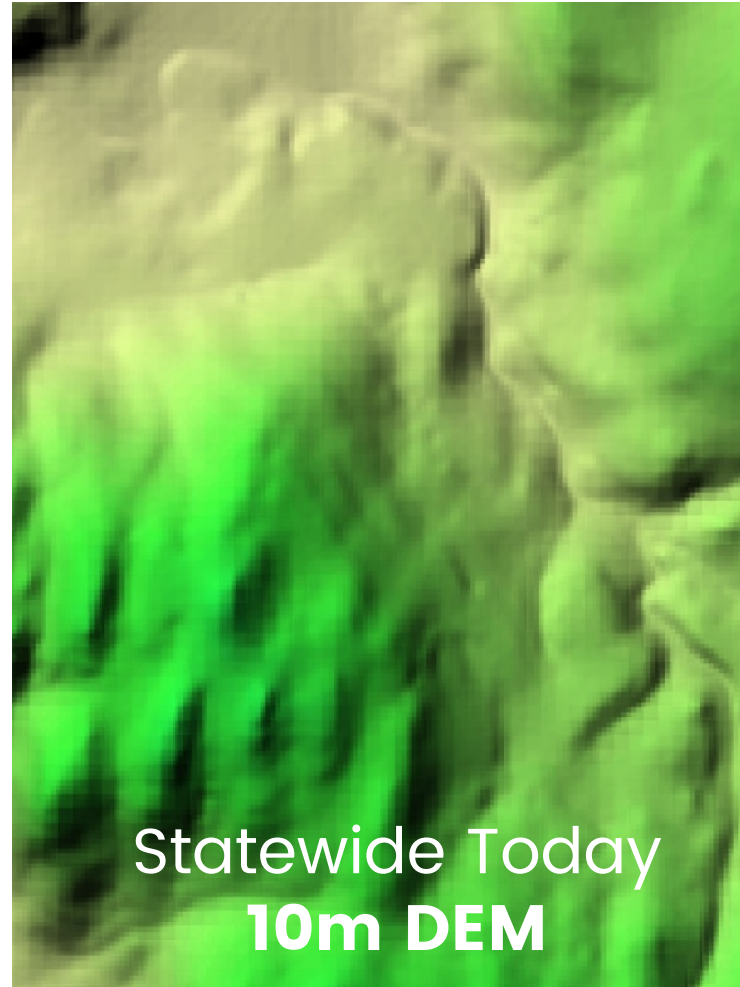
# LiDAR: Light Detection and Ranging



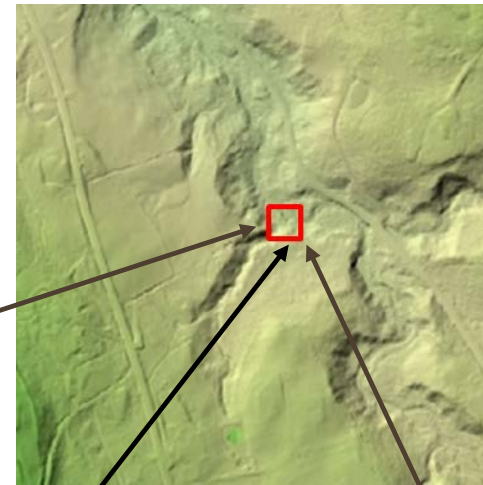
# LiDAR Resolution

**National Elevation Dataset:** Reported vertical accuracy= 8 ft.

**LIDAR:** Vertical accuracy= 3.6 in.



# LiDAR Resolution

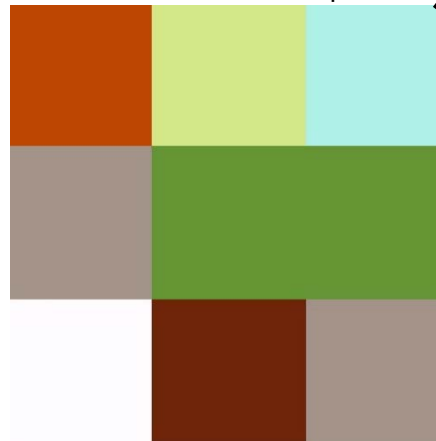


Cell size: 9688 sq ft



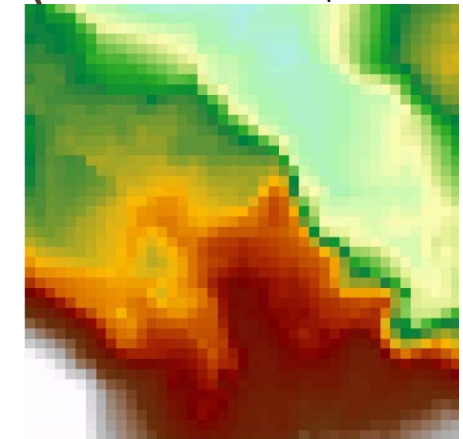
2009  
**30m DEM**

Cell size 1078 sq ft



Statewide Today  
**10m DEM**

Cell size 5.27 sq ft

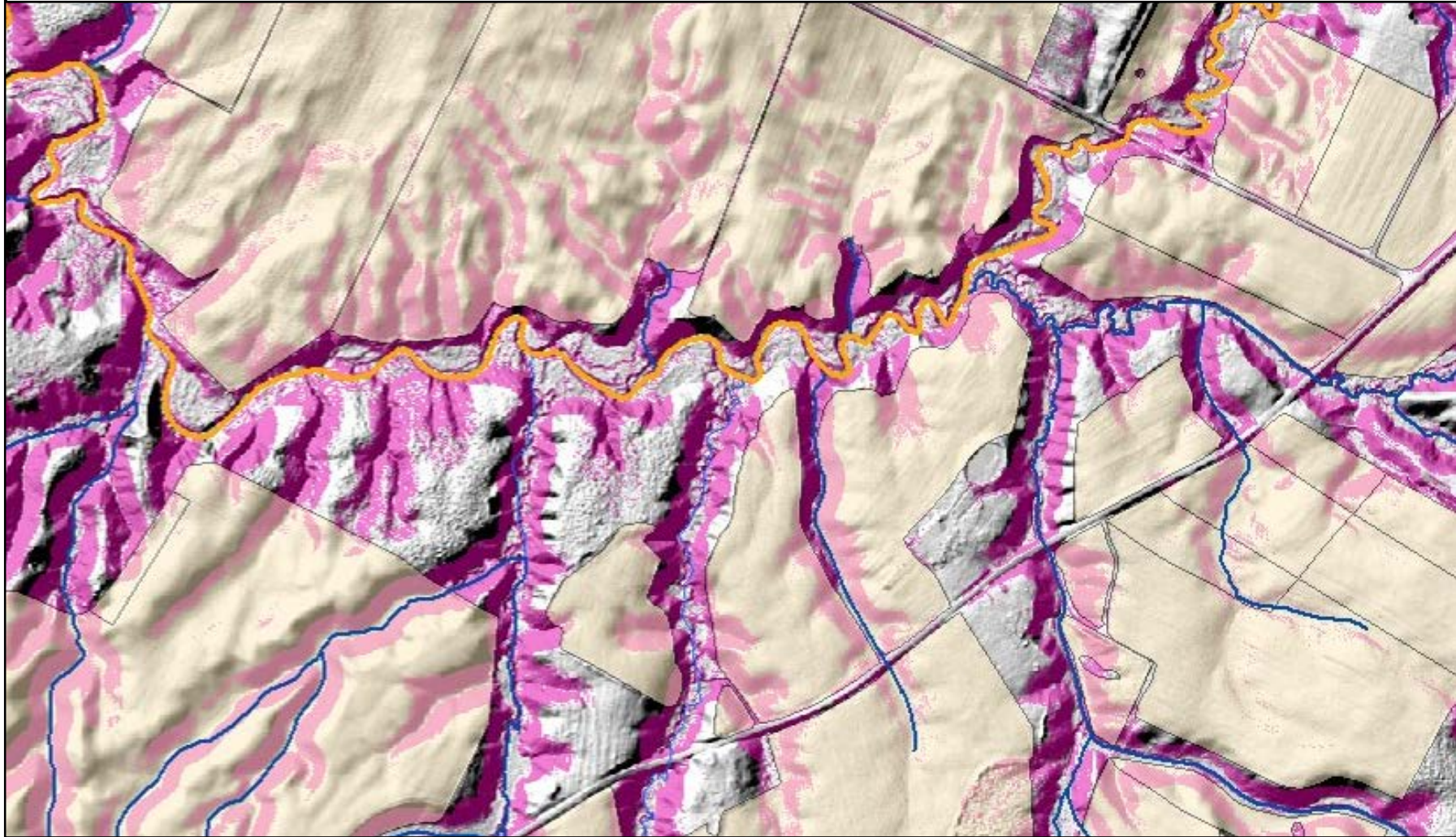


2018 Goal  
**0.7m DEM**

1836x more detail



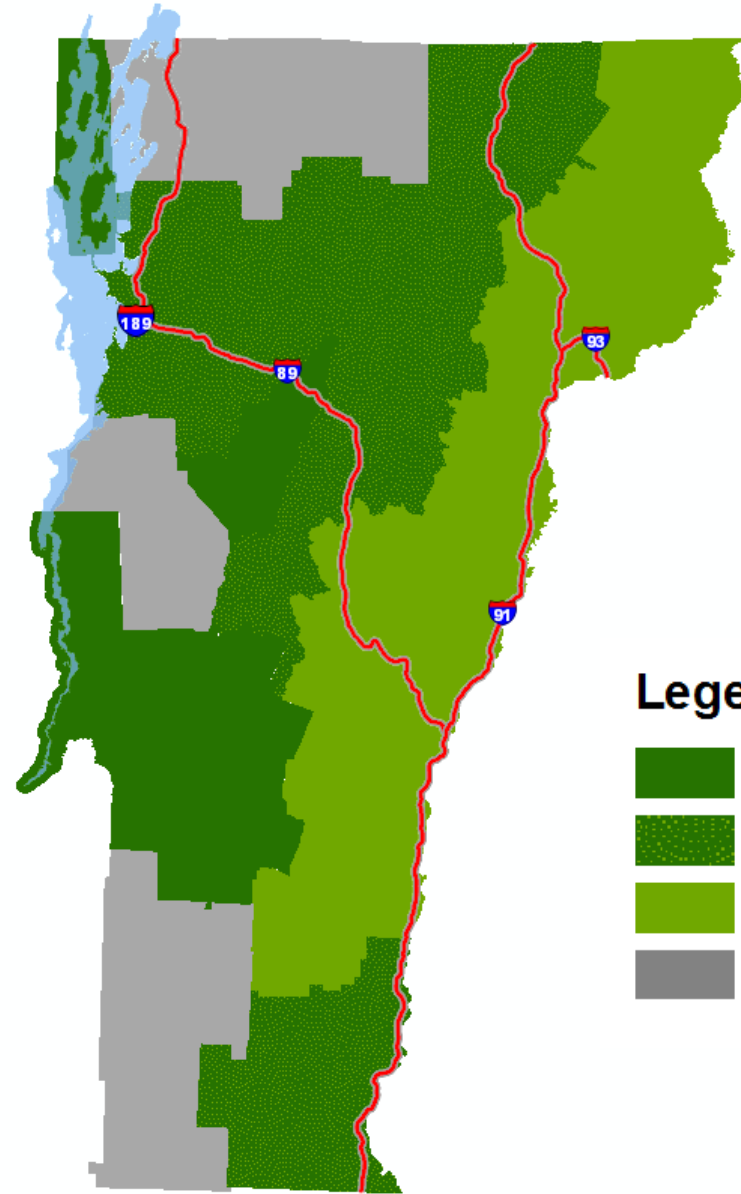
**Using LiDAR to Locate Ravines & Gullies: Conduits of Nutrients and Sediment into Lake Champlain; Caroline Alves –USDA / NRCS (NEARC 2015, Burlington, VT).**







**Final Result:** Gullies and Ravines shown in shades of magenta, Agricultural Areas in beige, Impaired Waters in orange. Flow accumulation & streams buffered 35 meters and used to extract slopes >8% in and near farm fields



# LiDAR Data Availability (QL2)

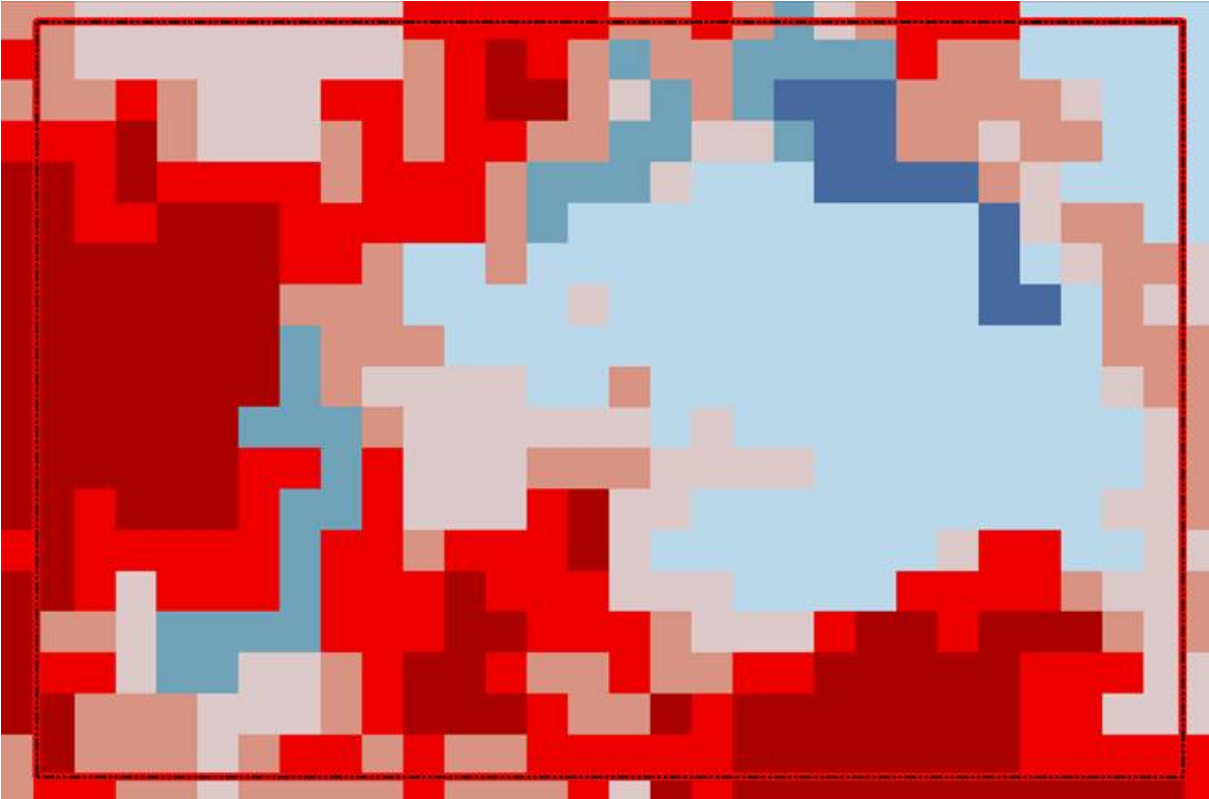


## Legend

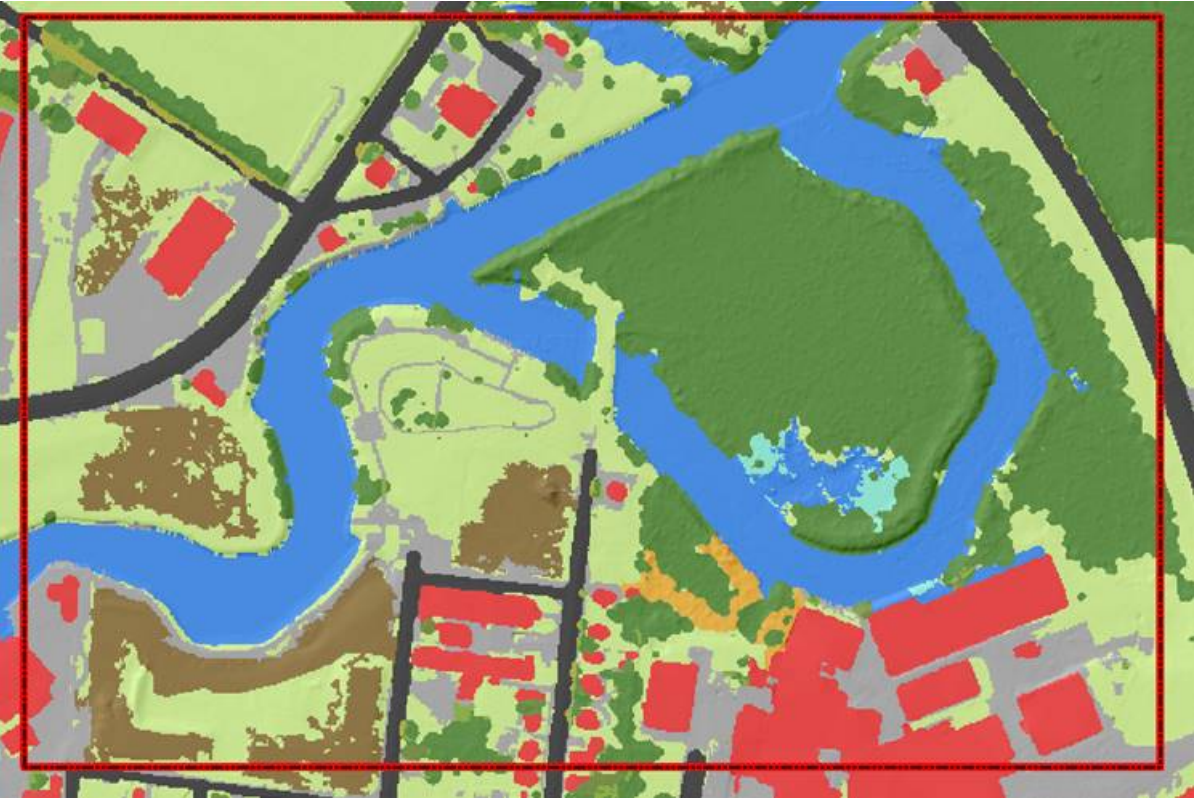
-  QL2 Data Available
-  QL2 Data Available Feb 2017
-  QL2 Flights Completed (Data Anticipated: Late 2017)
-  QL2 Flights Pending (Data Anticipated: Late 2018 or 2019)

# Land Cover / Impervious Surface

30M Resolution Land Cover



1M Resolution Land Cover



UVM SPATIAL ANALYSIS LAB

QUESTIONS?